

ESICM Congress 2023

Saturday 21st - Wednesday 25th October | Milan | Italy



Tuesday 24th October | 15:30 – 16:30 | Room : Space 3

How can a lytic-free thrombectomy impact the treatment of acute PE?



Prof Ana Viana-Tejedor

Acute Cardiac Care Unit Coordinator
Hospital Clínico San Carlos
Madrid, Spain

How can we identify IHR PE patients who may develop cardiogenic shock and can benefit from interventional treatment?



Dr Mohammed Rashid Akhtar

Consultant Interventional Radiologist
The Royal London Hospital
London, United Kingdom

Setting up an effective multidisciplinary team approach for an acute PE pathway.



Dr Marin Pavlov

Head of Cardiac ICU
University Hospital Dubrava
Zagreb, Croatia

How to achieve an immediate impact in the treatment of acute PE with the FlowTrierer[®] system.

Visit us on Booth #1-03

Lytic-free approach. Immediate impact.

Treat PE differently.



FLASH



FlowTriever® System

Percutaneous Pulmonary Embolectomy Clinical Registry Study

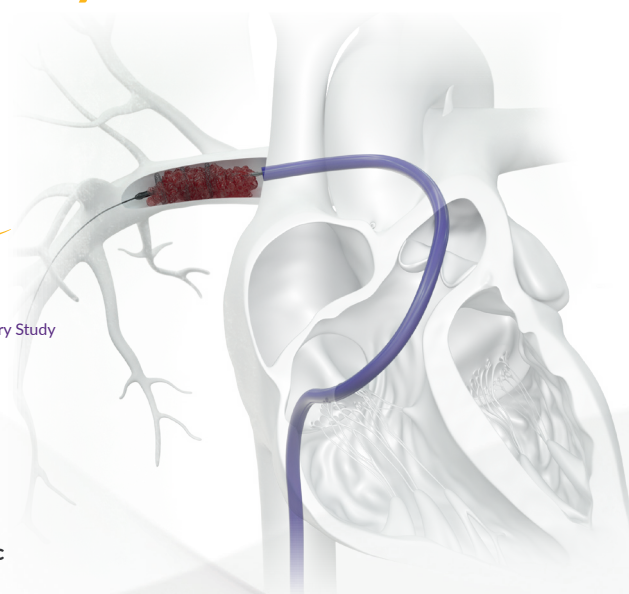
Largest prospective
interventional
registry of PE.

<1.0%

All-cause mortality at
30-day follow-up
N-734

Immediate Hemodynamic Improvement

800 patients enrolled

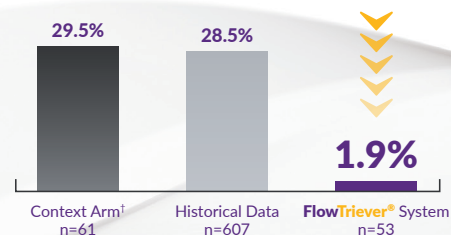


FLAME

FlowTriever® System

FlowTriever for Acute Massive Pulmonary Embolism

In-hospital Mortality



† Context arm patients were treated with systemic thrombolysis (68.9%), anticoagulation alone (23.0%), CDT (6.6%) or surgical thrombectomy (1.6%). Source: Outcomes In High-risk Pulmonary Embolism Patients Undergoing FlowTriever Mechanical Thrombectomy: Results From The FLAME Study presented at ACC March 2023 by Dr. Mitchell J. Silver

The FlowTriever® Retrieval/Aspiration System is indicated for (1) the non-surgical removal of emboli and thrombi from blood vessels; and (2) injection, infusion and/or aspiration of contrast media and other fluids into or from a blood vessel. The FlowTriever system is intended for use in the peripheral vasculature and for the treatment of pulmonary embolism. Indications, Contraindications, warnings and instructions for use can be found in the product labeling supplied with each device. **Caution:** Federal (USA) law restricts this device to sale by or on the order of a physician.

All trademarks are property of their respective owners.

Inari Medical, Inc. headquarters: 6001 Oak Canyon, Suite 100 | Irvine CA 92618

Inari Medical Europe GmbH, a subsidiary of Inari Medical, Inc. | Messeplatz 10 | 4058 Basel, Switzerland

www.inarimedical.com