



EDIC part II

Online examination guideline

Dear candidate,

The EDIC Part II examination currently follows the model of an objective structured clinical examination (OSCE) lasting at least 2 hours. This year, the autumn edition will take place in a virtual format and only directors, local coordinators, examiners and exam centre technical responsible will be physically in the exam centres.

The exam will follow the same proceedings: Candidates will have to pass several skill stations, including three different clinical scenarios using imitation patient charts and three computer stations where reading and interpretation of imaging, curves and biochemical scenarios are tested.

The exam will take place virtual and the candidates will connect via Internet. Different **virtual examination rooms** will be allocated within a communication tool (Big Blue Button) where all the **virtual stations** will be available.

Therefore, we hereby provide you with a guideline that includes accurate information to take the oral exam. Please read it carefully as it sets out the whole procedure and will help you prevent any possible issue that day.

Should you have any doubt, please do not hesitate to send us an email to: education@esicm.org

Lars HEIN
Chairperson
ESICM Examinations Committee

GET READY FOR THE EXAM

Surroundings

The environment you decide to take the exam **must** meet the following **requirements**:

- The room must be quiet in order to avoid any distraction.
- You must be alone in the room.
- The workspace must be clear of all materials and unauthorised supports: books, notes and other written materials as well as devices: tablet, watches, calculators and mobile phones.
- Taking pictures, screenshots or trying to copy/paste any element of the exam content are strictly prohibited.
- There should be no background noise from radio, television or other devices.



- Taking notes on scratch papers and pencils/pens are allowed during the exam, but you need to inform the examiner first.
- You must be dressed appropriately, with your face visible to the examiner all the time. No breaks are allowed.

Failure to adhere to the rules set out renders your exam result invalid.

Technical requirements

Verify that your computer meets the requirements before registering for the EDIC Part II exam. The exam cannot be taken if these requirements are not met. The following material is required:

- A strong and stable internet connection.
- A webcam, speaker and microphone (no headset/earphone).
- Smartphones or tablets are not allowed to take the exam.

Your computer camera and microphone will need to be on during the exam. It will allow examiners to proceed with questions and to check your surroundings and equipment during the exam. Please check all the technical requirements you will need to take the exam :

- Use a laptop or desktop. Smartphones or tablets **are not allowed**.
- Verify you have strong internet connection during the whole exam.
 - Preferable if you have fixed network cable or at least good WIFI connection.
 - Make sure that nobody else is in your network to avoid consuming bandwidth.
- Use a modern and compatible browser such as Chrome or Firefox or MS Edge. Safari is not advisable as it will not be able to complete the audio setup.
- Check the invitation letter to identify your **examination centre** and **station allocation**.
- Verify you can use the microphone and camera. **Headsets / earphones are not allowed**.
- Close all other communication software such as Skype, Teams, Zoom, etc.
- Verify that you have allowed the browser (Chrome, Firefox) to use the audio and camera. Avoid using Safari.
- Check carefully that you have all prepared for the exam day.

THE EXAM DAY

How to connect

The exam will take place in the online communication platform Big Blue Button. You will be allocated in one of the **virtual stations** according to the **time slot** indicated in the invitation letter. You will take the whole exam in the same station. Please follow these indications to connect to your station :

- Copy the direct **virtual station link** indicated in the invitation letter and paste it in your browser address bar.
- Use either Chrome, MS Edge or Firefox. Avoid Safari as it may involve some issues.
- If you cannot connect, please wait for a few minutes and retry. All time slots are scheduled according to specific times.

If you are in the afternoon time slot do not connect earlier since you will disturb the previous examinee and you might get disqualified.

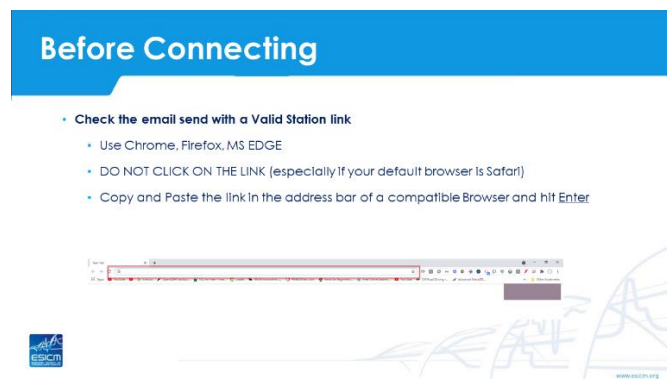


Figure 1: Prepare to connect in the Virtual Station Link

- Complete the audio test with microphone and speakers. Be reminded that **headsets / earphones are not allowed**.

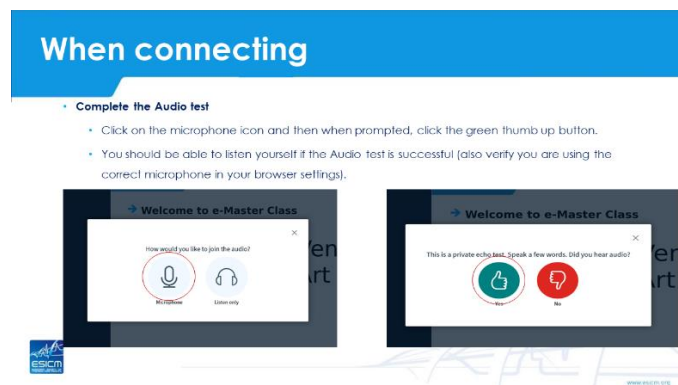


Figure 2: Audio Test

- You can always rejoin audio using the telephone icon located in the bottom center of the screen.

- Open your microphone and camera and check that work correctly.

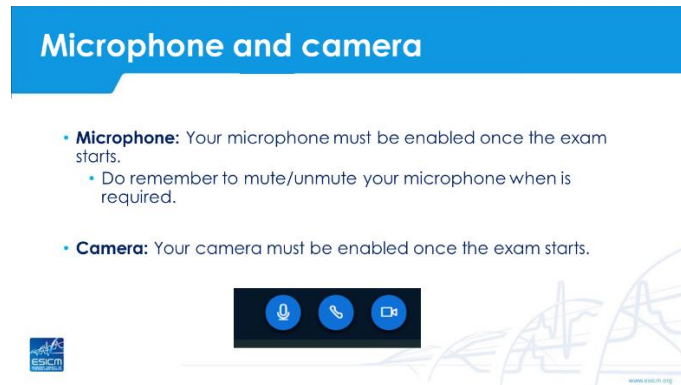


Figure 3: Microphone and Camera Controls

- Once you have completed all the checking, wait for the examiner/s. Then, you will be asked to:
 - Identify yourself by showing the **ID (with photo) or passport** and the invitation letter.
 - Proceed with the **proctor checking**. You will be asked to check the environment and the equipment. It will take some minutes to verify that everything is correct and according to the **compulsory requirements** before you start the exam.
- Start your exam. You will be visited by different examiners to proceed with all CCS and CBS.
- **Remain connected in your station the whole examination.**
- If you need a short break, please inform your examiner.

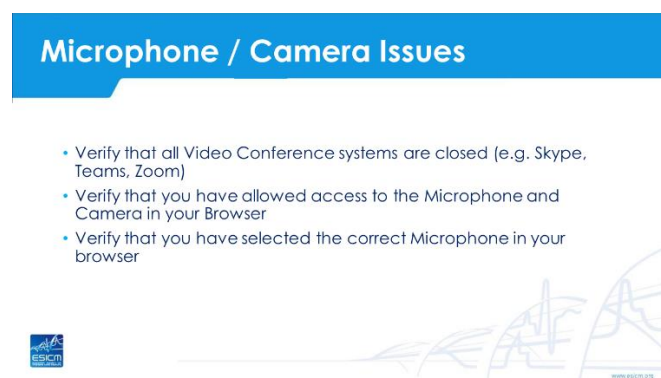


Figure 4: Tips for Microphone and Camera troubleshooting



The Intensive Connection

Remember:

1. Please ensure that you have your ID (or passport) and invitation letter with the correct validation date as this will be needed to check your identity the exam day.
2. Set the exam located in a private, well-lit room with no one else around you.
3. Clear your workspace from all materials.
4. Close all third-party programs and unplug any secondary monitors.
5. Remove any non-religious head coverings.

AFTER THE EXAMINATION DAY

The ESICM office will send you a feedback letter via email. This letter will inform you about the number of points necessary to pass de CCS section and the CBS sections, points achieved in both sections and whether your result for the oral exam is a pass or a fail.