

EXHIBITION MAP


LIST OF EXHIBITORS



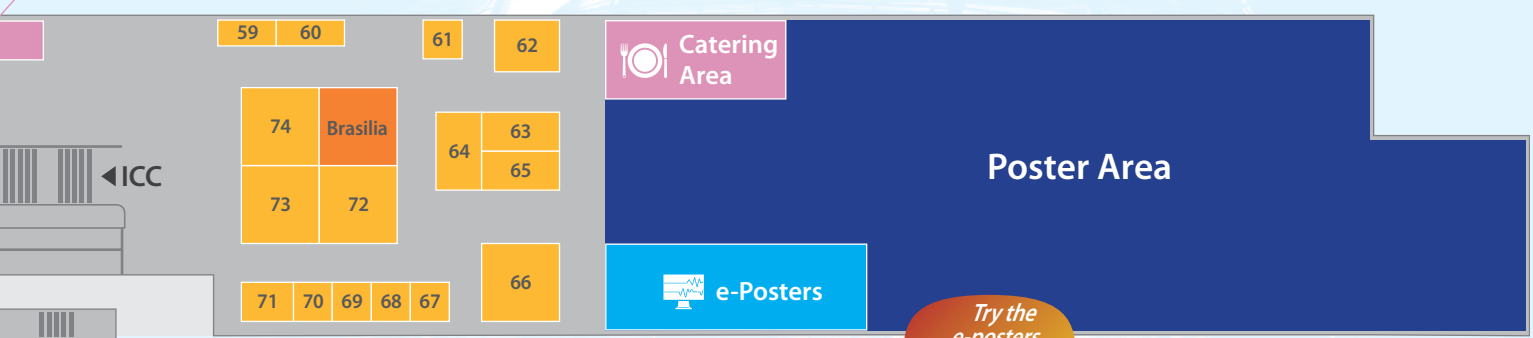
Booth No.	NAME
59	3W INFORMED
36	ABVISER MEDICAL
69	ALUNG TECHNOLOGIES
3	APPLIED PHYSIOLOGY
53	B. BRAUN MELSUNGEN
19	BAXTER HEALTHCARE
13	BELLCO
55	BENECHILL INTERNATIONAL
43	BERLIN-CHEMIE
70	BIOPORTO DIAGNOSTICS
63	BIOTEST
6	BMEYE
20	CHEETAH MEDICAL
67	CINCINNATI SUB-ZERO
11	CNSYSTEMS
8	CONVATEC
29	COOK MEDICAL
17	COVIDIEN
37	CYTOSORBENTS
7	DELTEX MEDICAL
16	DRÄGER
45	EDWARDS LIFESCIENCES
50	EIRUS MEDICAL
68	ESA

Booth No.	NAME
49	EXHIBITOR HELPDESK
52	FISHER & PAYKEL HEALTHCARE
24	FRESENIUS KABI
23	FRESENIUS MEDICAL CARE
26	GAMBRO
30	GE HEALTHCARE
27	HAMILTON MEDICAL
65	HEMODEC
73	HILL-ROM
28	HOSPITECH RESPIRATION
41	ICU MANAGEMENT
22	IMDSOFT
1	INTEGRA
56	INTENSIVE CARE MONITOR
71	ISICEM
10	INTERSURGICAL
48	KARL STORZ
54	KIMBERLY-CLARK
42	LIDCO
4	LINDE HEALTHCARE
15	MAQUET CRITICAL CARE
66	MASIMO
51	MEDIVANCE

Booth No.	NAME
2	MINDRAY
62	MITSUBISHI PHARMA DEUTSCHLAND
18	NESTLÉ HEALTH SCIENCE
25	NIHON KOHDEN EUROPE
14	NOVALUNG
74	ORION
44	PHILIPS MEDICAL SYSTEMS
12	PICIS
31	PULSION MEDICAL SYSTEMS
5	SIEMENS
35	SPRINGER
9	STARMED
21	TELEFLEX
64	THERMO FISHER SCIENTIFIC
8	TIMPEL
61	TORAY MEDICAL
40	TRACOE MEDICAL
57	TRANSONIC SYSTEMS EUROPE
39	VISION-SCIENCES
47	WEINMANN
46	WISEPRESS MEDICAL BOOKSHOP
58	ZOLL MEDICAL CORPORATION

 Visit us at the ESICM booth & members lounge! (lobby level)

Catering Area



Hall 15.1

Try the e-posters experience in the exhibition area



ESICM
LIVES 2011

LATEST INTENSIVE CARE VIEWS ON EDUCATION AND SCIENCE

GUIDE TO EXHIBITION

It is the exhibitor's responsibility to submit a description with no errors in grammar and spelling.

Booth Hall Name

59 15.1 3W INFORMED

36 13 ABVISER MEDICAL

Managing Intra-Abdominal Hypertension in your ICU patients has never been more compelling than now! The clinical benefits can lead to reducing your patient's ventilator time by up to 4 days; decrease your rate of ventilator-associated pneumonia (VAP) and your mortality risk. Now is the time to stop by the AbViser® Medical, LLC booth to learn more about the clinical and economic benefits of managing intra abdominal hypertension in your ICU. We are the market leader in measuring IAH and the only device with proven accuracy, reproducibility and safety.

69 15.1 ALUNG TECHNOLOGIES

ALung Technologies has developed the Hemolung Respiratory Assist System, a simple extracorporeal lung support device for treating patients with acute respiratory failure. The Hemolung System removes carbon dioxide and delivers oxygen directly to the blood utilizing a simple extracorporeal circuit, small venous catheter, and techniques similar to hemodialysis. The device can be used to help avoid intubation (exacerbated COPD), apply lung protective ventilation (e.g. ARDS), and to facilitate weaning from mechanical ventilation.

03 12 APPLIED PHYSIOLOGY

Applied Physiology develops clinical decision support systems for the critical care environment. The Navigator™ system continuously acquires physiological data from the bedside monitors to calculate real time graphical depictions of a patient's volume, resistive and heart states in relation to desired haemodynamic targets. The graphical display provides a visual aid in determining patients' requirements for volume, vasoactives and cardioactives.

53 14.1 B. BRAUN MELSUNGEN

B. Braun Melsungen AG, a globally operating family owned company with more than 41,000 employees. With innovative & state-of-the-art products focused on clinical safety, B. Braun leads the changing demands in health care around the world. The new 3-chamber bag is indicated for the supply of energy and essential fatty acids including omega 3 and omega 6 fatty acids, amino acids, electrolytes and fluid in the parenteral nutrition. With the balanced fluid therapy concept, B. Braun continually innovates in the field of fluid substitution and plasma volume replacement. B. Braun Space GlucoseControl realizes safe and reliable glucose levels in critically ill patients with a significantly reduced risk of hyper- and hypoglycaemia.

19 12 BAXTER HEALTHCARE

Baxter International Inc. develops, manufactures and markets products that save and sustain the lives of people with hemophilia, immune disorders, infectious diseases, kidney disease, trauma, and other chronic and acute medical conditions. As a global, diversified healthcare company, Baxter applies a unique combination of expertise in medical devices, pharmaceuticals and biotechnology to create products that advance patient care worldwide.

Booth Hall Name

13 12 BELLCO

Bellco is a European manufacturer of a complete range of Intensive Care products. Bellco has developed the Lynda equipment able to manage all CRRT treatments, plasma separation therapies, CPFA and ABYLCAP. Coupled Plasma Filtration Adsorption (CPFA) is a therapy dedicated to Sepsis using adsorbent Cartridges for specific clinical use. ABYLCAP is an extended and efficient treatment aimed at CO2 removal.

55 14.1 BENECHILL INTERNATIONAL

BeneChill is a medical device company based in San Diego, California. The company is developing products in the therapeutic hypothermia arena with a focus on rapid, non-invasive cooling for use in the field. The RhinoChill System is limited by U.S. law to investigational use only.

43 13 BERLIN-CHEMIE

Pharmaceutical competence in the heart of Europe. Dynamic growth, drug innovations and a wealth of experience that has matured over generations are the hallmarks of Berlin-Chemie. The company belongs to Italy's global Menarini Group and works mainly for the development of business in Germany, Eastern Europe and Asia. As one of the Menarini Group's three research sites, Berlin-Chemie is fully integrated in the research programme of the group. Berlin-Chemie is an innovation- and growth-orientated company with above average sales development. Berlin-Chemie maintains its own branches in 31 countries of Europe and Asia. Large-scale investment is taking place to further strengthen market positions. The main site of Berlin-Chemie and the modern production plant for infusion solutions is located in Berlin-Adlershof.

70 15.1 BIOPORTO DIAGNOSTICS

The early diagnosis of acute kidney injury (AKI) is of major importance in critical care medicine. BioPorto Diagnostics' focus is on the emerging early kidney biomarker NGAL and is proud to introduce The NGAL Test™ - a particle-enhanced turbidimetric assay for the quantitative determination of NGAL in human urine or plasma. The NGAL Test™, approved for IVD use in Europe and Canada, is designed for routine diagnostic use on chemistry analyzers from numerous manufacturers such as Roche, Abbott, Siemens, Beckman Coulter etc. effectively giving almost any laboratory immediate access to a fast and easy method to measure NGAL.

63 15.1 BIOTEST

Biotest is a provider of pharmaceutical and biotherapeutic drugs. With a value added chain that extends from pre-clinical and clinical development to worldwide sales, Biotest has specialised primarily in the areas of application of immunology and haematology. In its Plasma Protein segment, Biotest develops and markets immunoglobulins, coagulation factors and albumins based on human blood plasma. These are used for diseases of the immune and haematopoietic systems. In the Biotherapeutic segment, Biotest researches into the indications of rheumatoid arthritis and cancer of plasma cells. Biotest has more than 1,900 employees worldwide. The preference shares of Biotest AG are listed in the SDAX on the Frankfurt stock exchange.

Booth Hall Name**06 12 BMEYE**

BMEYE, based in Amsterdam, develops totally non-invasive advanced haemodynamic monitors. The company was founded in 2005 as a spin-off from TNO, an independent Dutch research organization. Backed by over 30 years of research and development, BMEYE focuses on non-invasive cardiac output and haemodynamic monitoring technology that has been validated extensively and used in groundbreaking products for space agencies. BMEYE constantly improves its products through research and clinical evaluations in close cooperation with physicians from many medical centers and universities around the world. BMEYE provides a unique non-invasive solution for the measurement of cardiac output and other advanced haemodynamic parameters, making haemodynamic monitoring a reality in daily clinical practice.

20 12 CHEETAH MEDICAL

Cheetah Medical delivers accurate, continuous, 100% noninvasive haemodynamic and cardiac output information, providing clinically actionable data for haemodynamic management in perioperative, critical care and emergency settings. The NICOM® monitor is powered by BIOREACTANCE® Technology, with validated accuracy compared to invasive methods. The system's accuracy, high precision, sensitivity and responsiveness make it an ideal tool for haemodynamic differential diagnosis, determination of fluid responsiveness, fluid optimization, drug selection and titration.

67 15.1 CINCINNATI SUB-ZERO

Cincinnati Sub-Zero has been delivering patient temperature management systems to healthcare professionals since 1963; we design with the patient in mind. Our complete line of products include therapeutic heating and cooling therapy units along with a complete line of warming and cooling blankets for body temperature regulation and hyper-hypothermia treatment.

11 12 CNSYSTEMS

CNSystems is technology leader in the development of non-invasive medical devices designed for real-time evaluation of all medical conditions characterized by rapid and short-term changes in haemodynamics. With its CNAP Monitor 500, the company succeeded in revolutionizing the method of non-invasive continuous blood pressure monitoring in Anaesthesiology and perioperative care. CNAP PPV is CNSystems' latest non-invasive development and provides essential information on the fluid status of the patient for an even better haemodynamic optimization during surgery.

08 12 CONVATEC

ConvaTec is a leading developer of innovative medical technologies that have helped improve the lives of millions of people worldwide. In Ostomy Care, Wound Therapeutics, Continence and Critical Care, and Infusion Devices – ConvaTec products support health care professionals from hospital to community health settings.

29 12 COOK MEDICAL

Cook® Medical remains at the forefront of innovative products for critical care medicine. Cook manufactures the Dolphin tracheostomy introducer for balloon-assisted tracheostomy and the Ciaglia Blue Rhino® for percutaneous tracheostomy – now both available with the new VersaTube™ Tapered Tracheostomy Tube. Our Critical Care portfolio also includes a wide variety of devices for Centesis and Drainage, the Tiger 2™ Self-Advancing Nasal Jejunal Feeding Tube, Spectrum® Minocycline/Rifampin central venous catheters and airway devices for intubation, exchange and extubation.

Booth Hall Name**17 12 COVIDIEN**

Covidien is a leading global healthcare products company that creates innovative medical solutions for better patient outcomes and delivers value through clinical leadership and excellence. Covidien manufactures, distributes and services a diverse range of industry-leading product lines in three segments: Medical Devices, Pharmaceuticals and Medical Supplies. With 2010 revenue of \$10.4 billion, Covidien has 41,000 employees worldwide in more than 65 countries, and its products are sold in over 140 countries.

37 13 CYTOSORBENTS

CYTOSORBENTS is a critical-care focused therapeutic device company using blood purification to treat life-threatening diseases such as sepsis, ARDS, burn injury, trauma and acute pancreatitis. Its purification technology uses biocompatible, highly porous polymer beads that actively remove toxins from blood and other bodily fluids by pore capture and adsorption. CytoSorb™, the company's flagship product, has recently achieved European regulatory approval for commercial sale in the E.U. under the CE Mark as an extracorporeal cytokine filter in situations where cytokines are elevated. CytoSorb™ is designed to modulate the immune system by removing excessive cytokines, or "cytokine storm", in ICU patients that can lead to deadly inflammation, multiple organ failure, secondary infection, and often death.

07 12 DELTEX MEDICAL

Deltex Medical has developed and proven the CardioQ-ODM Oesophageal Doppler Monitor. The CardioQ-ODM has been clinically proven in numerous Randomised Clinical Trials to reduce post-operative complications, ICU admissions and hospital stay. The CardioQ-ODM has recently received a recommendation from the National Institute of Health and Clinical Excellence (NICE) after a thorough evidence-based review by the Medical Technology Advisory Committee (MTAC).

16 12 DRÄGER

The Dräger is an international leader in the fields of medical and safety technology. Dräger products protect, support and save lives. Founded in 1889, in 2010 Dräger generated revenues of around EUR 2.18 billion. The current product range of the medical division includes anaesthesia workstations, ventilators for emergency and critical care as well as warming therapy for premature infants. Patient monitoring, IT solutions, accessories and consumables, ceiling supply units, light systems and central supply systems for medical gases complete the portfolio. The Dräger Group is currently present in more than 190 countries and has about 11,000 employees worldwide.

45 13 EDWARDS LIFESCIENCES

At Edwards Lifesciences, we strive to provide you with the valuable information you need for tailored perioperative optimization and haemodynamic management of the ICU patient. From the very first Swan-Ganz™ pulmonary artery catheter to the FloTrac™ sensor and PediaSat™ oximetry catheter, to the latest VolumeView™ set and EV1000™ clinical platform, our goal remains the same... to provide you with the choice in how you manage the haemodynamics of your critically ill population.



Booth Hall Name**50 14.1 EIRUS MEDICAL**

Eirus Medical is introducing the Eirus™ system for continuous glucose monitoring intended for ICU use. The Eirus system combines central venous access with second-by-second monitoring of glucose and lactate in intensive care patients. The glucose value is presented on a monitor as a numeric value and a trend curve allowing for continuous glycemic control. The technology is based on microdialysis, a well-proven and accurate technology for intravenous monitoring. No blood is pulled from the patient and it doesn't require a separate line into the patient. In 2009, the Eirus system gained initial CE-approval for continuous glucose and lactate monitoring in blood. During 2009-2011, the system has been verified for performance and accuracy in hundreds of ICU patients with excellent result.

68 15.1 EUROPEAN SOCIETY OF ANAESTHESIOLOGY (ESA)

The European Society of Anaesthesiology represents all anaesthesiologists in Europe. It aims to promote the exchange of information between European anaesthesiologists raising the speciality's standards by fostering and encouraging education, research, scientific progress and the exchange of information. ESA organises the Euroanaesthesia, an annual congress taking place in Europe around May – June every year. Euroanaesthesia 2012 takes place 9 -12 June in Paris, France.

LOBBY LEVEL EUROPEAN SOCIETY OF INTENSIVE CARE MEDICINE (ESICM)

The European Society of Intensive Care Medicine is an international non profit-making association of doctors, nurses, physiotherapists and other allied healthcare professionals. The number of members is now reaching 5000. The Society is devoted to the promotion of intensive care medicine, education, research, and professional development. Information on Membership, EDIC, PACT, Educational/Research and Scientific activities are available at our booth. The ESICM members are welcome in the ESICM Members Lounge: the exclusive place for ESICM members to relax, refresh and meet each other.

49 14.1 EXHIBITORS DESK – TECHNICAL ASSISTANCE FOR EXHIBITORS**52 14.1 FISHER & PAYKEL HEALTHCARE**

Fisher&Paykel Healthcare has been specialized in respiratory humidification for 40 years. Based in New-Zealand, our company develops and produces innovative solutions for both hospital care and homecare: heated humidifiers and single use patient kits and interfaces for respiratory therapies, from invasive ventilation to oxygen therapy. One of our last innovations consists in the new respiratory support system NHF (Nasal High Flow) through our unique Optiflow patient interfaces. NHF allows actual FIO2 control from 21 to 100%, continuous anatomical dead space washout, positive airway pressure deliver, and optimized mucociliary clearance. NHF is a new tool within the respiratory care continuum.

Booth Hall Name**24 12 FRESENIUS KABI**

Fresenius Kabi is dedicated to the therapy and care of critically and chronically ill patients inside and outside the hospital by providing intravenously administered drugs, infusion therapies, clinical nutrition and related medical devices.

The company applies its long-standing expertise in pharmaceuticals and medical devices to support clinical staff and care professionals in the best therapy of patients.

23 12 FRESENIUS MEDICAL CARE

Fresenius Medical Care is the world's largest integrated provider of products and services for individuals undergoing dialysis because of kidney failure, a condition that affects more than 2 million individuals worldwide. The company also provides a wide range of products for hemodialysis and peritoneal dialysis such as hemodialysis machines, dialyzers and related disposable products. With innovative dialysis products and therapies we define highest standards for the treatment of the patients.

26 12 GAMBRO

Gambro has been pioneering solutions for patients in Acute Therapies for more than 45 years. As the only partner with a full line of products and services for renal and hepatic care providers, we are constantly seeking ways to advance the technology. The result is innovative products & therapies supporting our customers. Gambro - Your home of INNOVATION.

30 12 GE HEALTHCARE

GE Healthcare provides transformational medical technologies and services that are shaping a new age of patient care. Our broad expertise in medical imaging and information technologies, medical diagnostics, patient monitoring systems, drug discovery, biopharmaceutical manufacturing technologies, performance improvement and performance solutions services help our customers to deliver better care to more people around the world at a lower cost. In addition, we partner with healthcare leaders, striving to leverage the global policy change necessary to implement a successful shift to sustainable healthcare systems.

27 12 HAMILTON MEDICAL

Hamilton Medical was born from a passion to improve the lives of ventilated patients and the people who care from them. HAMILTON MEDICAL began 1983 with a new generation of intelligent microprocessor controlled intensive care ventilators featuring revolutionary new modes and diagnostic tools.

Today HAMILTON MEDICAL maintains this tradition with the world's finest ICU ventilation technologies and a total dedication to Intelligent Ventilation by offering a full range of ventilation solutions, from clinical to mobile ICU.

Intelligent Ventilation respiratory care solutions from HAMILTON MEDICAL deliver a unique combination of: ease of use in complex environments, improved patient outcome and efficiency through innovation resulting into World's first full closed loop ventilation INTELLIVENT-ASV.

65 15.1 HEMODEC

The Decap® is a mini-invasive easy technique for extracorporeal CO2 removal. It works with a veno-venous, low flow, percutaneous single access, without side effects. It provides a substantial support for the Acute Respiratory Failure and allows ultra-protective ventilation conditions to avoid VILI. Applications are ARDS, MOF, COPD, Bridge to Transplant, Pulmonary Surgery, Politrauma, etc. Decap® is a registered trademark of Hemodec and the product is widely distributed in the world by Hemodec International. The Decap® system is also object of a very important randomized multi-center trial called: "Enhance Lung Protection" Study, which will start in summer 2011.

73 15.1 HILL-ROM

Hill-Rom® is a leading worldwide manufacturer and provider of medical technologies and related services for the health care industry, including patient support systems, safe mobility and handling solutions, non-invasive therapeutic products for a variety of acute and chronic medical conditions, medical equipment rentals, and information technology solutions. Hill-Rom's comprehensive product and service offerings are used by health care providers across the health care continuum and around the world in hospitals, extended care facilities and home care settings to enhance the safety and quality of patient care.

28 12 HOSPITECH RESPIRATION

HOSPITECH RESPIRATION focuses on developing a platform technology and products aiming at improving the mechanical ventilation procedure and reducing the rate of mechanical ventilation complications.

The ANAPNOGUARD technology by Hospitech provides continuous, closed-loop control of air leakage and optimization of the ET tube's cuff pressure. The control is based on CO2 monitoring above the cuff, where high CO2 level above the cuff indicates a leak. It also provides automated, effective evacuation of secretions from above the cuff.

The device and ET tubes are CE cleared & the tubes are FDA cleared. 1st pilot clinical study has been successfully completed in Europe, a 2nd study is ongoing and a multi center study is planned for end of 2011 through 2012. Initial sales in Europe are expected to start in 2012.

41 13 ICU MANAGEMENT

ICU Management is the Official Management and Practice Journal of the International Symposium on Intensive Care and Emergency Medicine (ISICEM) and is working in close collaboration with the most important international associations and congresses. Based on the most recent clinical developments, the journal focuses on best practice, efficiency, better value-for-money investments, cost savings, ethics, optimal patient and staff satisfaction. Produced four times per year under the stewardship of Prof. Jean-Louis Vincent and international Editorial Board, the journal is the point of reference in the increasingly sophisticated area of critical care and emergency medicine.

22 12 IMDSOFT

iMDsoft is the provider of the MetaVision Suite - leading Clinical Information Systems for critical, perioperative, and acute care. Installed in hundreds of ICUs worldwide, MetaVision for ICUs (MV-ICU) has proven itself to be an invaluable tool for critical care management, and has successfully improved quality of care and increased financial outcomes all over the globe. The system collects, presents, stores, and analyzes the vast amount of patient-related data generated in the ICU. It produces a comprehensive electronic medical record, and is available with advanced tools for decision support, clinical assessment, treatment, and care planning. MetaVision supports all types of intensive care units, providing specialty products for adult, neonatal and pediatric units.

01 12 INTEGRA

Integra develops, manufactures and markets implants and surgical instruments used in neurosurgery, spine surgery, reconstructive surgery, orthopaedic surgery and general surgery. Integra was founded in 1989, as the result of innovation in the first artificial dermal regeneration matrix composed of collagen. From this initial technological achievement, Integra went on to develop the first dermal regeneration matrix, a pioneer step into the domain of neurosurgery which established Integra one of the key player in this field. With leading products and brands in Neurosurgery and Neuro Critical Care, (Mayfield®, Cusa Excel®, DuraGen®, OSVII®, Licox®, Camino®, Accudrain®, Radionics®), Integra is one of the professional's preferred partner.

56 14.1 INTENSIVE CARE MONITOR

Intensive Care Monitor is an evidence-based, current awareness journal for the busy intensivist. Each issue has specially written extended abstracts of original papers which impact on critical care, mainly RCTs, meta-analyses and systematic reviews. The papers are graded for evidence level, with an expert comment from a leading international specialist, summed up by a 'bottom line'. Papers of particular interest carry a symbol denoting 'hot topic', 'bright idea', 'top quality research' and 'could change clinical practice'. Each issue carries self-assessment questions, making it ideal for a Journal Club. Now in its eighteenth year with over 100 issues published, ICM is available on subscription six times a year with an index. The journal is a must for the clinician who wants to be better informed.

LOBBY LEVEL INTENSIVE CARE SOCIETY (ICS)

The Intensive Care Society was founded in 1970 and incorporates a growing membership of over 2800 members including Consultants, SAS Doctors, Trainees, Medical Students, Nurses and Allied Healthcare Professionals who work in intensive care in both the UK and worldwide. The Society works closely with the Department of Health, Royal Colleges and the Faculty of Intensive Care Medicine. The Society's activities include the production of standards, guidelines, education through its Annual Conference in December and Seminars and provides support and advice to ex-patients and relatives. Together with the Intensive Care Foundation, the research arm of the Society, grants are awarded for critical care related research and promotes a growing number of fundraising initiatives to help fund these important grants.



Booth Hall Name**71 15.1 INTERNATIONAL SYMPOSIUM ON INTENSIVE CARE AND EMERGENCY MEDICINE (ISICEM)**

The objective of this four day symposium is to review concepts and technology and present recent advances in the management of critically ill patients.

The symposium includes formal presentations as well as practical discussions such as tutorials, round tables, pro-con debates, "meet the experts", ...

Original scientific posters will be also presented.

The meeting is open to all physicians, nurses and other allied health professionals in intensive care and emergency medicine.

10 12 INTERSURGICAL

Intersurgical manufacture and supply a complete range of respiratory care products for use in the Intensive Care and Emergency areas. The Intersurgical product range covers all respiratory requirements from the patient connection through to the equipment offering the complete solution to your needs.

- A complete range of breathing systems for adults, paediatrics and neonates available in Smoothbore, Flextube and Compact tube.
 - Active humidification systems
 - Patient connections
 - Resuscitation systems
 - Breathing Filters and Heat & Moisture Exchangers
 - Oxygen and Aerosol Therapy products.
 - A range of CPAP Breathing Systems and C-PEEP fixed value valves
- Choose the Intersurgical range for Quality, Innovation and Choice.

48 14.1 KARL STORZ

KARL STORZ is a renowned manufacturer that is well established in all fields of endoscopy and can be considered as market leader in rigid endoscopy. The still family held company was founded in 1945 in Tuttlingen, Germany, and has grown to one with a worldwide presence and 5300 employees. KARL STORZ offers a range of both rigid and flexible endoscopes for a broad variety of applications. Today's product range also includes fully integrated concepts for the OR and servicing.

54 14.1 KIMBERLY-CLARK

Kimberly-Clark understands the complex issues you face to prevent, diagnose and manage VAP. We are committed to help you protect your patients from VAP, by providing effective clinical solutions to address the risk factors:

- Keeping the ventilator circuit closed
- Promoting comprehensive & routine oral care
- Lowering the risk of micro-aspiration of secretions past the ETT cuff
- Facilitating a distal airway sample for the diagnosis of VAP

Kimberly-Clark* KIMVENT* VAP Solutions: a wide range of innovative products & solutions, clinical education, in-service training, web-based resources & compliance programs - all designed to help you provide consistent & comprehensive care for your patients.

Booth Hall Name**42 13 LIDCO**

LiDCO develops, manufactures and markets medical devices primarily for Critical Care and Anesthesia patients.

The LiDCOplus™ monitor, provides a range of haemodynamic parameters including beat to beat cardiac output (CO), oxygen delivery (DO₂), stroke volume (SV), systemic vascular (SVR), blood pressure (BP) and dynamic preload parameters (PPV and SVV). LiDCO also offers the LiDCOrapid™ Haemodynamic Monitor which is designed to facilitate fast and effective fluid management across the perioperative environment.

LiDCO's validated technology has been shown to reduce complications by 40% and length of stay by an average of 12 days for high risk surgical patients. (Pearse et al Critical Care).

04 12 LINDE HEALTHCARE

Linde Healthcare is dedicated to providing products, therapies and services to hospitals, patients, clinics, nursing facilities and emergency management services. Present in 70 countries around the world, we have established a solid foundation as the medical gas and clinical care specialist. We work to ensure our solutions are always delivered and serviced to the highest possible standards of quality and security. A true healthcare partner, we combine a unique knowledge of healthcare realities with continuous research and development.

15 12 MAQUET CRITICAL CARE

GETINGE GROUP is a leading global provider of products and systems that contribute to quality enhancement and cost efficiency within healthcare and life sciences. We operate under the three brands of ArjoHuntleigh, GETINGE and MAQUET.

As a trusted partner for hospitals and clinicians since 1838, MAQUET is a global leader in medical systems that advance surgical interventions, cardiovascular procedures and critical care. MAQUET develops and designs innovative products and therapeutic applications for the operating room, hybrid OR/cath lab, intensive care unit and patient transport within acute care hospitals, improving outcomes and quality of life for patients.

MAQUET Critical Care portfolio includes market-leading intensive care ventilators, SERVO-i, and anesthesia machines FLOW-i.

66 15.1 MASIMO

Masimo is a global medical technology company that develops and manufactures innovative noninvasive monitoring technologies, including medical devices and a wide array of sensors that may enable earlier detection and treatment of potentially life-threatening conditions. A key medical technology innovator, Masimo is responsible for the invention of award-winning noninvasive technologies that are revolutionizing patient monitoring, including Masimo SET® pulse oximetry, Masimo rainbow SET® noninvasive and continuous hemoglobin (SpHb®), acoustic respiration rate (RRa™), and Masimo Patient SafetyNet™, and SEDLine® (EEG-based) Brain Function Monitors.

51 14.1 MEDIVANCE

Medivance's Arctic Sun is the only non-invasive product in the market specifically designed to manage the core temperature of critically ill patients. The Arctic Sun offers a superior temperature management solution in both ease of use and performance.

Medivance is the leading company in Target Temperature Management™ (TTM).

Keywords:

- 1) Hypothermia
- 2) Normothermia
- 3) TTM Target Temperature Management

Booth Hall Name**02 12 MINDRAY**

Mindray was founded in 1991 with the goal of delivering high-quality, competitively priced medical devices to make healthcare more accessible and affordable around the world. In 2006, Mindray listed on the New York Stock Exchange and is now a leading developer, manufacturer and marketer of medical devices worldwide. The company has three well-established business segments: Patient Monitoring and Life Support Products (Anesthesia machine & Ventilator), In-Vitro Diagnostic Products and Medical Imaging Systems. Mindray has a global R&D network with research centers in Shenzhen, Beijing, Nanjing, Seattle, New Jersey and Stockholm. Approximately 10% of total revenue has been consistently re-invested into R&D each year. An average of eight new products has annually been introduced to the market.

62 15.1 MITSUBISHI PHARMA DEUTSCHLAND

Mitsubishi Pharma Deutschland GmbH, whose headquarter is in Düsseldorf, is the first of the country-based branch offices run by Mitsubishi Tanabe Pharma Corporation to market products resulting from its own research work in markets outside Asia.

The parent company, Mitsubishi Tanabe Pharma Corporation, is one of the leading research-based pharmaceutical companies in Japan and has its headquarters in Osaka.

The company has set itself the target of offering a continuous flow of innovative drugs worldwide to meet global market needs.

Mitsubishi Pharma Deutschland GmbH is a subsidiary of Mitsubishi Pharma Europe Ltd. which has its headquarters in London, United Kingdom.

18 12 NESTLÉ HEALTH SCIENCE

Nestlé HealthCare Nutrition, part of Nestlé Health Science, makes a positive difference in the nutritional health, well-being and quality of life of patients through the development and delivery of innovative, medically recognised branded nutritional solutions. Our range of solutions helps to optimise the nutritional intake of individuals whether their goal is to combat disease and/or recover better and faster or to stay healthy. Our range addresses normal and disease-specific nutritional needs and related services including patient and healthcare professional education and training. Nestlé Health Science has worldwide headquarters in Lutry (Switzerland).

25 12 NIHON KOHDEN EUROPE

NIHON KOHDEN is one of Japan's leading players in medical technology development and manufacturing, and has subsidiaries and representative offices in Europe, the US, and the Middle and Far East.

"Fighting Disease with Electronics" – our corporate philosophy – reflects the high standards we have set ourselves in combating disease by developing medical systems, contributing to higher quality of life for patients. Our product range focuses on patient monitoring, cardiology (ECG equipment and defibrillators) as well as neurology (EEG, EMG and EP). NIHON KOHDEN electronic medical equipment is known for its high quality, ease of use and safe, secure handling.

Booth Hall Name**14 12 NOVALUNG**

„Solutions for Lung Failure“: Novalung's mission is to create new solutions for the treatment of lung failure with innovative artificial lungs that "breathe" outside the patient's body. Imagine a world in which many patients in the Intensive Care Unit are not placed in an artificial coma so that they can tolerate mechanical ventilation, but rather experience their treatment while awake and breathing easily and spontaneously. Patients who can communicate, eat and drink. This can become reality when an iLA® therapy is used to support the breathing process. The new allrounder for lung failure, iLA active®, covers the full range of respiratory support: from highly effective carbon dioxide elimination to complete oxygenation.

74 15.1 ORION

Orion is an innovative European R&D-based pharmaceutical and diagnostic company with a special emphasis on developing medicinal treatments and diagnostic tests for global markets. Orion develops, manufactures and markets human and veterinary pharmaceuticals, active pharmaceutical ingredients and diagnostic tests. Orion's pharmaceutical R&D focuses on the following core therapy areas: central nervous system drugs, cancer and critical care drugs, and Easyhaler® pulmonary drugs.

44 13 PHILIPS MEDICAL SYSTEMS

Philips is one of the world's leading technology companies, with a long history of practical innovation and visionary design. In healthcare, we are committed to understanding the human and technological needs of patients and caregivers. We believe this understanding will help us deliver solutions that not only enable more confident diagnoses and more efficient delivery of care, but also improve the overall experience of care. We offer equipment, software, and services for imaging, patient monitoring, resuscitation and much more. Visit us at booth 44 to learn more. People focused. Healthcare simplified.

12 12 PICIS

Picis provides a critical care information solution that takes full advantage of the advances in clinical documentation and workflow management, patient information generated from bedside devices, clinical decision support tools and remote access – resulting in improved critical care processes. In addition, Picis offers automatic notifications based on clinician-defined rules and business intelligence, providing actionable insight about patient stays within the critical care environment.

31 12 PULSION MEDICAL SYSTEMS

Haemodynamics - Are you in control?

Get the complete picture...

PULSION Medical Systems is a leading specialist in Advanced Haemodynamic Monitoring and provides you with a variety of technologies to optimize haemodynamic management of your critically ill patients at the ICU and the OR.

See more than others...

- Calibrated real-time cardiac output, Cardiac output trend (uncalibrated) for OR, Volumetric preload, Volume responsiveness, Afterload, Contractility, Continuous ScvO₂, Splanchnic perfusion, Liver function, Pulmonary pressure, Intra-abdominal pressure, Lung edema assessment at the bedside

Products:

- PiCCO₂, PulsioFlex, ProAQT, CeVOX, LiMON, CiMON



Booth Hall Name**LOBBY LEVEL SOCIETY OF CRITICAL CARE MEDICINE (SCCM)**

The Society of Critical Care Medicine is the only multiprofessional, international organization devoted to securing the highest quality care for all critically ill and injured patients. With 14,000 members worldwide, the Society is the only professional organization devoted exclusively to ensuring excellence in the practice of critical care through education, research and advocacy.

05 12 SIEMENS

Siemens Healthcare Diagnostics offers a comprehensive portfolio of performance-driven systems, unmatched test menu, and information technology solutions for the in vitro diagnostic needs of hospital labs, reference labs, physician office labs, and point-of-care testing. We provide clinicians with the vital information they need for accurate diagnosis, treatment, and monitoring of patients. Our diagnostic solutions – chemistry, immunoassay, automation, hematology, hemostasis, microbiology, diabetes, urinalysis, blood gas, and molecular testing – are designed to streamline workflow, enhance operational efficiency, and support improved patient care.

35 13 SPRINGER

Springer is one of the leading international publishing companies, publishing some 2,000 journals and more than 6,500 new book titles every year in the STM sector. Springer publishes "Intensive Care Medicine", the official journal of the ESICM, and many more relevant books and journals in this interesting field.

09 12 STARMED

The Helmet Company
 Helmet: the most comfortable interface for CRAP therapy and non invasive ventilation.
 Ventukit: the right device for easy CRAP therapy.
 Ventumask: mask for easy CRAP by simply connecting to the oxygen source.

21 12 TELEFLEX

Teleflex is a leading global provider of specialty medical devices used for diagnostic and therapeutic procedures in critical care, urology and surgery.
 Our mission is to provide solutions that enable healthcare providers to improve outcomes and enhance patient and provider safety. We specialise in devices for general and regional anaesthesia, cardiac care, respiratory care, urology, vascular access and surgery and we serve healthcare providers in more than 130 countries.
 Newly designed DEHP-free ETT, ISIS convertible ETT and laryngeal masks with integrated Cuff Pilot™ complement our extensive range in airway management (ET and tracheostomy tubes; products for humidification, filtration, oxygen and aerosol therapy; temperature management; regional anaesthesia; vascular access).

64 15.1 THERMO FISHER SCIENTIFIC

BRAHMS GmbH, Part of Thermo Fisher Scientific, specializes in innovative products which facilitate earlier diagnosis of diseases and better control of therapy, thus enabling doctors to provide more efficient and economic patient care.
 Major fields of activity are diagnosis of infectious and thyroid diseases, cardiology and pneumology as well as sepsis, tumors, and Down's syndrome.

Booth Hall Name**38 13 TIMPEL**

ENLIGHT®
 now you can see!
 Founded in 2004, our goal is to make more patients survive mechanical ventilation, enabling insights into the lung that have never been seen before.
 The lung is no longer a "black box" any longer. Using Electrical Impedance Tomography (EIT) images physicians obtain an immediate feedback of what they do. This way they can improve patient care, save lives and reduce the overall cost of care.

61 15.1 TORAY MEDICAL

Toray Medical is a global healthcare company with major business fields of acute blood purification, hemodialysis and cardiology. Toraymyxin, which is an extracorporeal hemoperfusion cartridge to remove blood endotoxin for the treatment of severe sepsis and septic shock, improves haemodynamics in refractory septic shock patients and reduces mortality. We launched Toraymyxin in 1994 in Japan and now it is clinically used world wide, including Italy, Spain, Russia and India.

40 13 TRACOE MEDICAL

TRACOE medical is one of the leading manufacturers of tracheostomy tubes with 50 years of experience in the field of tracheostomy and laryngectomy.
 Special requirements call for special solutions, which is why TRACOE medical offers a complete product line consisting of various product families which complement each other. They start with percutaneous sets for performing dilation tracheostomy, include tracheostomy tubes, and extend to items for postoperative care and rehabilitation.
 Tracheostomy accessories help hospitals and homecare facilities to keep their costs under control while supporting patients in using, cleaning and properly caring for them.
 All tracheostomy tubes are developed by TRACOE medical as they have the know-how for innovations to form and to be turned into practice-orientated products.

57 14.1 TRANSONIC SYSTEMS EUROPE

Transonic Systems new COstatus® Haemodynamic Monitor measures cardiac output and blood volumes in critically ill patients. The set of haemodynamic parameters assist physicians in ICU and PICU treatment decisions. Using gold standard indicator dilution technology, COstatus® establishes a new benchmark for ICU diagnostics, especially for pediatrics. Developed by Transonic Systems, the 28 year global leader in flow measurement technology, it is the first of its kind available for use in a PICU setting.

39 13 VISION-SCIENCES

Vision-Sciences provides advanced flexible video and fiber optic endoscopy systems, including the BRS-5000 Flexible Bronchoscope, the first distal chip bronchoscope with the EndoSheath® Technology. EndoSheath® Bronchoscopy gives practitioners an "always ready" bronchoscope that utilizes the sterile, disposable EndoSheath® Technology; a protective barrier between the scope and patient that allows for rapid equipment turnaround, enhanced infection control, and less capital and service costs.

47 14.1 WEINMANN

Simply professional

You can rely on Weinmann. We set standards in mobile solutions around ventilation. Experience gained in more than 130 years and our closeness to users consistently yield intelligent, perfectly coordinated system solutions for emergency, transport and disaster medicine. Weinmann can help you optimize the mobile care of patients in your hospital. Many of the devices, such as the MEDUMAT Transport ventilator, are already in use in countless hospitals around the globe. Weinmann offers the solutions you need for anything from emergency room care and in-hospital emergencies to resuscitation and intra- and interhospital transportation.

46 13 WISEPRESS MEDICAL BOOKSHOP

Wisepress.com, Europe's leading conference bookseller, has a complete range of books and journals relevant to the themes of the meeting. Books can be purchased at the stand or, if you would rather not carry them, posted to you – Wisepress will deliver worldwide. In addition to attending 200 conferences per year, Wisepress has a comprehensive medical and scientific bookshop online with great offers.

58 14.1 ZOLL MEDICAL CORPORATION

ZOLL Medical Corporation develops and markets medical devices and software solutions that help advance emergency care and save lives, while increasing clinical and operational efficiencies. With products for defibrillation and monitoring, circulation and CPR feedback, data management, fluid resuscitation, and therapeutic temperature management, ZOLL provides a comprehensive set of technologies which help clinicians, EMS and fire professionals, and lay rescuers treat victims needing resuscitation and critical care. ZOLL develops and manufactures its products in the United States. More than 400 direct sales and service representatives, 1,100 business partners, and 200 independent representatives serve our customers in over 140 countries around the globe.



Ecalta is indicated for the treatment of invasive candidiasis in adult non-neutropenic patients¹

Ecalta™: Efficacy (anidulafungin IV) without adjustment¹

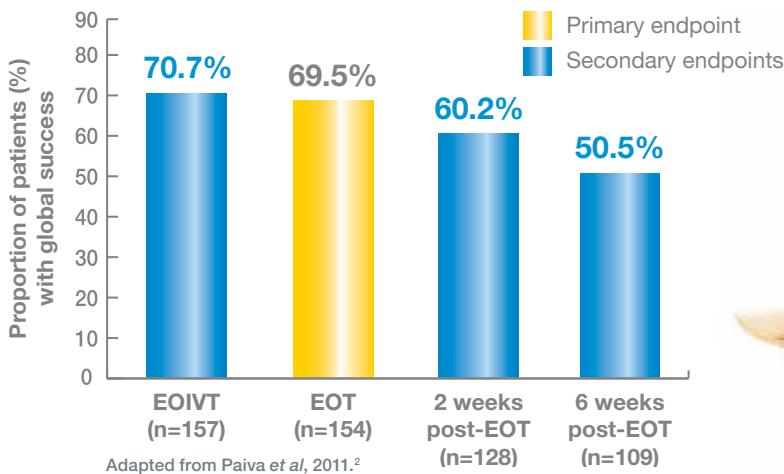
Now
New Data

ice
INVASIVE CANDIDIASIS
INTENSIVE CARE STUDY

Now new data in ICU patients!

In the ICE trial, Ecalta® was effective and generally well tolerated for the treatment of candidaemia/invasive candidiasis (C/IC) in selected ICU populations²

Global response to therapy in ICU patients (evaluable MITT patients)



In this prospective, open-label, multicentre trial, the positive global response at end of all therapy was achieved by 69.5% (95% CI: 61.6–76.6) of patients treated with Ecalta® (eMITT patients)²

Safety outcomes²

Treatment-related adverse events (AEs) (Ecalta® +/- voriconazole/fluconazole) occurred in 33/216 (15.3%) patients in the safety population, 4 (1.9%) of whom had serious AEs

ICU, intensive care unit; eMITT, evaluable modified intent-to-treat; AEs, adverse events; EOIVT, end of IV therapy; EOT, end of therapy

A phase IIIb, prospective, open-label, multicentre study in adult ICU patients with APACHE II score <25, confirmed candidaemia/IC within 96 h before to 48 h after start of study treatment, and at least one of the following: post-abdominal surgery, solid tumour, renal or hepatic insufficiency, solid organ transplant, neutropaenia, age ≥65 years. Patients received intravenous Ecalta® (200 mg day 1, followed by 100 mg/day thereafter) for ≥10 days, optionally followed by oral voriconazole or fluconazole for a total maximum treatment duration of 56 days. A total of 216 patients received at least one dose of Ecalta®. At baseline, mean APACHE II score was 16.2 (range, 4-26), mean SOFA score 7.2 (range, 0-20) and mean Candida score 3.4 (95% CI, 3.2-3.6). At baseline, the most common pathogens were *C. albicans*, *C. glabrata*, *C. parapsilosis*, and *C. tropicalis* (55.9%, 14.7%, 10.0%, and 7.6%, respectively). Among MITT patients (n=170), 71.2% had candidaemia. The primary endpoint was global (combined clinical and microbiologic) response at EOT in the eMITT patients. Secondary endpoints included global response at the end of intravenous treatment, and 2 and 6 weeks after EOT, survival at day 90, and incidence of AEs. Global response was reported in eMITT patients (i.e. patients who did not have a global response of "unknown" or "missing" at any particular time point). Among MITT patients, mean overall treatment duration was 19.9 days (range, 1-67), with a mean duration of anidulafungin therapy of 15.9 days (range, 1-42). In this study, the MITT population (n=170) included 13 neutropaenic patients (neutrophil count <500/mm³). Ecalta® is not indicated for the treatment of candidaemia or IC in neutropaenic patients.

1. Ecalta® 2010 Summary of products characteristics.
2. Paiva JA et al. Poster 297. Presented at SCCM 2011.

ECALTA® 100 mg powder for producing a concentrate for producing a solution for infusion

Active ingredient: anidulafungin

Composition: Active ingredient: Each injection vial contains 100 mg anidulafungin.

The reconstituted solution contains 3.33 mg anidulafungin per millilitre and the diluted solution contains 0.77 mg anidulafungin per millilitre. **Additional ingredients:** fructose (Ph.Eur.), mannitol (Ph.Eur.), polysorbate 80, tartaric acid (Ph.Eur.), sodium hydroxide (for pH adjustment), hydrochloric acid 36% (for pH adjustment).

Indications and usage: For the treatment of invasive candidiasis in non-neutropenic, adult patients. ECALTA has been studied primarily in patients with candidemia and only in a limited number of patients with deep Candida infections or abscesses. **Contraindications:** Hypersensitivity to the active ingredient, to one of the additional ingredients, or to other drugs in the class of echinocandins. **Adverse reactions:** Common: coagulopathy, hypokalemia, convulsions, headache, reddening of the skin, diarrhea, vomiting, nausea, alanine aminotransferase increased, alkaline phosphatase increased, aspartate aminotransferase increased, bilirubin increased, gamma-glutamyltransferase increased, rash, pruritus,

creatinine increased. Uncommon: hyperglycemia, hypertension, hot flashes, epigastric pain, cholestasis, urticaria, pain at the infusion site. Frequency not known: hypotension, bronchospasm, dyspnea. **Warnings:** This drug should not be used in patients with rare hereditary fructose intolerance. Please also refer to the Summary of Product Characteristics. **Dispensing:** Prescription required. **Marketing authorization holder:** Pfizer Limited, Ramsgate Road, Sandwich, Kent, CT13 9NJ, United Kingdom. Representative in Germany: PFIZER PHARMA GmbH, 10785 Berlin. **Revised:** October 2010.

The above information was prepared according to the German SmPC. For prescribing information in other countries, please contact your local Pfizer office. Please consult your local SmPC for further information. Full UK and German SmPC are available at Pfizer hospitality suite.

Pfizer Anti-Infectives

Ecalta™
(anidulafungin IV)
Efficacy without dose adjustment

EUROPEAN SOCIETY
OF INTENSIVE CARE
MEDICINE



For more information, contact

**European Society of
Intensive Care Medicine (ESICM)**

Congress Department

Rue Belliard 19

1040 Brussels

BELGIUM

Tel: +32 (0)2 559 03 75

Fax: +32 (0)2 559 03 79

Lisbon2012@esicm.org



**ESICM
LIVES 2012**

LISBON

25TH ANNUAL CONGRESS

CCL-LISBON - PORTUGAL

13 - 17 OCTOBER 2012

For physicians, nurses and other
allied healthcare professionals

**Abstract submission deadline:
15 April 2012**

www.esicm.org